

Gen. Operating Manual Device description

Version 1 – 2020

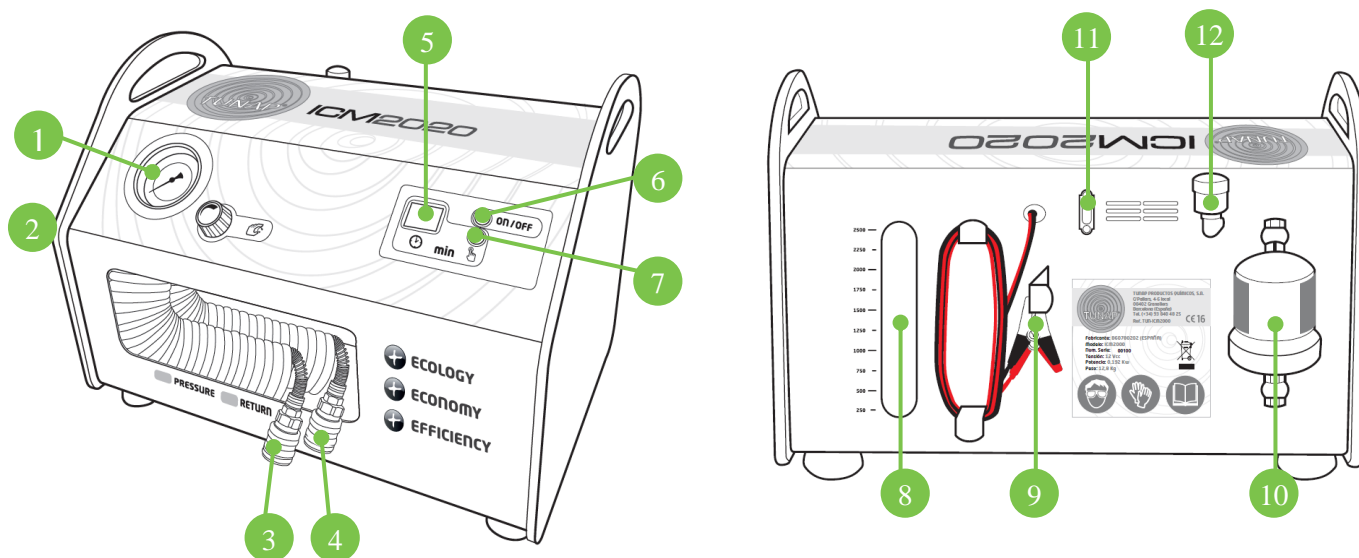


13310- Injecto Clean Machine 2020 for Injector cleaning diesel & gasoline fuel injection systems

Introduction

We congratulate you on purchasing the TUNAP Injecto Clean Machine 2020 and thank you for the trust you have placed in us. With the TUNAP ICM cleaning system, we have implemented the latest technology in the field of injector cleaning. This enables you to achieve the best cleaning results and high customer satisfaction while at the same time reducing costs sustainably. In order to be able to use the full function of the system, we ask you to carefully observe the information and notes summarized in this operating manual.

Device description



1	Pressure gauge	7	Button to set cleaning time
2	Pressure regulator	8	Level indicator
3	Quick coupling for the return (black)	9	Connection terminals 12V DC
4	Quick connector for the inlet (blue)	10	Fuel filter
5	Display	11	15A fuse
6	Off / On button	12	Filler coupling

Technical specifications

Weight	12.8 kg	nominal voltage	12V DC
power	0.192 Kw		

The specifications provided in this Service Information sheet are the results of careful analysis. Any application-related specifications shall be viewed as recommendations based on past experiences. Due to the wide variety of applications and work methods, we are unable to provide binding specifications. Therefore, there exists no contractual legal relationship, nor will secondary obligations arise from any purchase contracts. Only the most recent version of the Service Information sheet retains its validity.

TUNAP GmbH & Co. KG | D-82515 Wolfratshausen | Tel. 08171 / 16 00 – 0 | info@tunap.com | www.tunap.com

TUNAP.COM

Gen. Operating Manual Device description

Version 1 – 2020



Scope of delivery

1. TUNAP Injecto Clean Machine 2020 including the connection hoses for the fuel supply and return with quick couplings for the supplied universal connection adapters.
2. 6 universal adapters for connecting the TUNAP Injecto Clean System to the vehicle's fuel inlet and return lines.
3. 2 clamps.
4. 1 universal straight connector.
5. 1 user manual (Digital - QR code backside of the machine)

- ✓ Before the TUNAP Injecto-Clean Machine 2020 is started up for the first time, check that the delivery is complete. If the delivery is incomplete, please contact TUNAP.
- ✓ Before using the device for the first time, please pay attention to possible defects or damage to the device or the connecting cables/hoses.
- ✓ If defects or damage are found, do not put the device into operation and contact TUNAP.

Special safety instructions

Please also note the separate service information / manufacturer's instructions SI 937 & SI 938 and read them carefully and completely before using the TUNAP Injecto Clean Machine 2020 for the first time. The service information can be found online or contact your TUNAP contact person.

The TUNAP Injecto Clean cleaning system is only intended for professional use in the automotive industry and is approved for the following cleaning purposes:

- ✓ Cleaning of injection systems on diesel vehicles.
- ✓ Cleaning of injection systems on gasoline vehicles.

The safety precautions must be observed to avoid damage to the device, to the injection system to be cleaned and to avoid personal injury. Personnel who have sufficient basic knowledge of automotive technology may only operate the Injecto Clean Machine 2020.

- ✓ Don't open the Injecto Clean Machine 2020. All warranty claims expire when the device is opened.
- ✓ Only the manufacturer of the ICM 2020 should carry out maintenance, service or repairs on it.
- ✓ To ensure safety, only use original TUNAP spare parts and accessories.
- ✓ If the connecting hoses or the connecting cable (power supply) is damaged, these must be replaced immediately.



Important information before operation

- ✓ Cleaning takes place without dismantling the injectors.
- ✓ Before disconnecting the fuel lines, make sure that the lines are not under pressure.
- ✓ Wear suitable protective clothing, gloves and eye / face protection.
- ✓ The engine must be at operating temperature before cleaning.

Application

- ✓ Check the User manual (QR code on the back of the ICM 2020)
- ✓ Place the device on a flat surface and ensure a safe stand.
- ✓ Connect the electric cable (red = plus, black = minus)
- ✓ Carry out the cleaning as described in SI 937 or SI 938.

Important information after cleaning

- ✓ Carry out a test drive after cleaning. Read / reset fault memory.
- ✓ After cleaning and for further prevention, fill in the appropriate TUNAP system active ingredient (see service information / manufacturer's instructions SI 937 & SI 938).
- ✓ If the device is not used for more than a week after cleaning or if a vehicle is to be cleaned with other fuel afterwards, please empty the tank from the ICM 2020 and the connection lines (see Service Information SI 937 & SI 938).

The specifications provided in this Service Information sheet are the results of careful analysis. Any application-related specifications shall be viewed as recommendations based on past experiences. Due to the wide variety of applications and work methods, we are unable to provide binding specifications. Therefore, there exists no contractual legal relationship, nor will secondary obligations arise from any purchase contracts. Only the most recent version of the Service Information sheet retains its validity.

TUNAP GmbH & Co. KG | D-82515 Wolfratshausen | Tel. 08171 / 16 00 – 0 | info@tunap.com | www.tunap.com

TUNAP.COM